

Smappee EV Wall Business

Installation manual

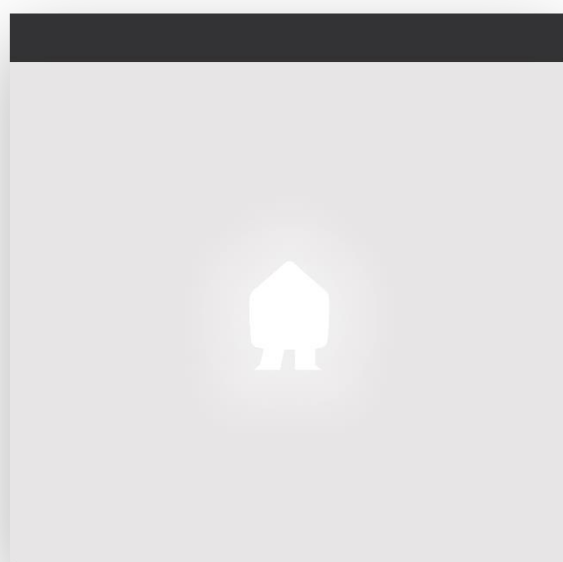


Table of contents

1. Introduction	3
2. Safety instructions.....	4
3. Models	6
4. Components.....	7
5. Technical specifications.....	8
6. Preparing the installation	9
7. Installation and activation	12
8. Using the EV Wall Business	23
9. Declaration of conformity	27

1. Introduction

Thank you for purchasing this Smappee EV Wall Business charging station for electric vehicles, the smartest charging station for businesses.

This installation and user manual tells you how to install and use the Smappee EV Wall Business. We advise you to read the contents of this manual carefully, to ensure a safe and proper installation and enable you to use all the advanced features of this product to their full extent.

Support

Only qualified electricians or equivalent may install the Smappee EV Wall Business. If you have any questions, please contact your service partner.

Please have the following information ready to hand to speed up the process: Article number and serial number which you can find on the identification label of the charging station.



Should your local distributor be unable to help you, or you have a suggestion for us, you can contact Smappee at: **support@smappee.com**.

Smappee n.v.
Evolis 104
8530 Harelbeke
Belgium

2. Safety instructions



Safety warning

Fully read and follow the safety instructions below before you install, service or use your Smappee EV Wall Business. The installer must ensure that the charging station is installed in accordance with the relevant national and local regulations.

Carrying out activities on this charging station without the relevant knowledge and qualifications can lead to serious accidents and death. Only carry out tasks for which you are qualified and have been fully instructed.

Incorrect installation, repairs or modifications can result in danger to the user and may void the warranty and liability.

Safety precautions

	CAUTION: Risk of electric shock.
	CAUTION: Refer to the accompanying documentation whenever you see this symbol.

Please observe the following safety precautions to avoid potential electric shock, fire, or personal injury:

- Use this charging station only for its intended purpose.
- Switch off electrical power supply to your charging station before installation or maintenance work.
- Do not use the charging station if damaged / defective.
- Do not immerse the charging station in water or any other liquids.
- Do not expose the charging station to heat, flame or extreme cold.
- Do not attempt to open, repair, or service any parts. Contact Smappee or your service partner for further information.
- Only use the charging station under the specified operating conditions.
- Do not allow children to operate a charging station.
- When a charging station is in use, adult supervision of any children present is required.
- While charging the charging cable must be completely unwound and connected to the electric car without overlapping loops. This to avoid the risk of overheating the charging cable.

Maintenance

- Observe the maintenance schedule.
- Clean the outside only with a dry, clean cloth.
- Do not use abrasive agents or solvents.

Keeping order

- After charging, store the charging cable properly so it does not present a tripping hazard.
- Make sure the charging cable cannot become damaged (kinked, compressed or driven over).
- Do not place any objects on the charging station.

Transport and storage

- Disconnect electrical power supply before removing the charging station for storage or relocation.
- Only transport and store the charging station in its original packaging. No liability for damage incurred will be accepted if the charging station is transported in non-standard packaging.
- Store the charging station in a dry environment within the temperature range specified in the technical specifications.

3. Models

Article no.	EAN	Description
EVWB-332-BR-E-W	5425036932159	EV Wall Business White 3-Phase 22 kW Socket
EVWB-332-BR-E-B	5425036932166	EV Wall Business Black 3-Phase 22 kW Socket
EVWB-332-C2R-E-W	5425036932197	EV Wall Business White 3-Phase 22 kW Type 2 cable 2,5m
EVWB-332-C2R-E-B	5425036932203	EV Wall Business Black 3-Phase 22 kW Type 2 cable 2,5m
EVWB-332-C8R-E-W	5425036932234	EV Wall Business White 3-Phase 22 kW Type 2 cable 8m
EVWB-332-C8R-E-B	5425036932241	EV Wall Business Black 3-Phase 22 kW Type 2 cable 8m

4. Components

Components included

1. 1 x Smappee EV Wall Business
2. 1 x EV Wall mounting plate
3. 3 x Screws
4. 3 x Plugs
5. 3 x Small screws

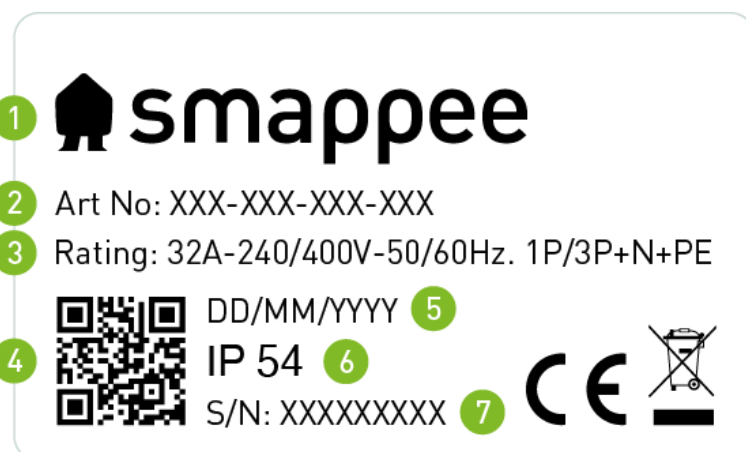
Type 2 EV charging cable

In case of a fixed cable version the cable is supplied in a separate box.

1. 1 x 2.5 m or 8 m open-ended to type 2 EV charging cable
2. 1 x cable tie for strain relief
3. 8 m version: 1 x EV cable holder + 3 x screws + 3 x plugs

Identification label

The identification label of your charging station is located on the left inside of the EV Wall Business.



1. Manufacturer
2. Article number
3. Rating
4. QR code containing article number and serial number
5. Manufacturing date
6. Degree of protection
7. Serial number

5. Technical specifications

Feature	Description	
	Socket	Type 2 cable
Technical features		
Charging capacity	Single or triple phase, 3.7 to 22 kW	
Output power	1-phase or 3-phase, 230 V – 400 V, 32 A	
Charge mode	Mode 3 (IEC 61851)	
Connection case	1 x Case B (Socket type 2)	1 x Case C (Fixed cable with type 2 connector)
Integrated Residual Current Monitor	Rated operating residual current detection : 6 mA DC / 30 mA AC	
Metering	MID certified class B	
Interfaces & Connectivity		
Information status	RGB LED	
Session activation	Plug and charge, Scan QR code, Swipe RFID card, Smart EV schedules	
Connectivity	Ethernet 100BASE-T	
Communication protocol	OCPP 1.6 JSON	
Certifications and Standards		
Product certification	CE	
Standards	IEC 61851-1 (2017)	
Environment		
Enclosure material	Steel (housing), aluminium (front plate)	
Enclosure rating	IP54 / IK10	
Enclosure standard colours	RAL9016 (star white) + RAL7021 (black grey)	
Operating temperature	-25 °C to 60 °C	
Storage temperature	-25 °C to 80 °C	
Relative humidity	0 % - 95 %, non-condensing	
Maximum installation altitude	0 – 2.000 m	
Physical properties		
Dimensions	300 x 300 x 110 mm	
Weight (excluding packaging)	6.2 kg	6.8 kg (2.5 m cable) or 9.8 kg (8 m cable)
Charging cable length	N/A	1 x 2.5 m or 1 x 8 m
Mounting method	Wall	

6. Preparing the installation


The first step is to prepare the physical installation of the EV Wall Business as described in this chapter.

Installation prerequisites

- Calculate the existing electrical load to find the maximum operating current for the charging station installation. The Smapppee EV Wall Business is equipped with 1 connector (socket or fixed cable) which needs to be powered. Note that with the Smapppee overload protection functionality more charging stations or the total maximum operating current can be higher than the physical installation allows.
- Determine the voltage drop over the distance from the power supply panel to the charging station installation. The voltage drop must not exceed 5 %. It is advised that the maximum voltage drop be 3 %. The maximum wire gauge that can be fitted is 10 mm². Local regulations may be applicable and can vary depending upon the region or country.
- Obtain all necessary permits from the relevant local authority.
- Refer to local wiring regulations to select the conductor sizes and use only copper conductors.
- Make sure that the installation area of the charging station is adequate for usability and ventilation purposes.
- Use the correct tools and provide sufficient material resources and protection measures.
- Make sure that there is a stable internet connection available for each EV Wall Business, via ethernet cable.

Route power supply

- The appropriate wire gauge of the supply cable depends on the power rating and distance between the meter cabinet and the charging station. The voltage drop must not exceed 5%. It is advisable to have a maximum voltage drop of 3%. The maximum wire gauge that can be fitted is 10 mm².
- Route the power supply cables to the position where the charging station will be installed together with an Ethernet cable for the internet connection.
- Make sure that there is at least 30 cm cable available at the location of the EV Wall Business to be able to connect it easily internally.

	The power supply enters the station at the bottom of the housing.
	The Ethernet cable used for the internet connection also enters the charging station via the floor plate. Ensure that you attach the RJ-45 connector only after inserting the cable into the EV Wall Business housing.

The maximum power rating for each connector is specified in the table below.

Power per connector	Connection	Input current	Output current
3.7 kW	1-phase	1 x 16 A	1 x 16 A
11 kW	3-phase	3 x 16 A	3 x 16 A
22 kW	3-phase	3 x 32 A	3 x 32 A

Route ethernet cable

The EV Wall Business requires a stable internet connection via Ethernet. An RJ-45 connector (not supplied) should be attached to the end of the cable. Only attach the RJ-45 connector **after** inserting the cable into the housing. The RJ-45 connector will not fit through the EV Wall Business's cable gland!

Prepare the mounting

All Smappee EV Wall Business types are designed to be mounted on a wall.

When positioning the EV Wall Business, take into account that the power supply cables and communication cable are entering the housing at the bottom through cable glands. The central M32 cable gland is for the power supply, the M20 cable gland for the communication cable.

Tools (not included)

- Screwdrivers
- 3 mm Hex screwdriver
- 7 mm socket wrench with extension bar
- Multimeter and earth ground meter
- Wire stripper and cutter.
- Needle-nose pliers.
- Ferrules crimper, for stranded power supply cables
- Drill and rock drill diameter 10 mm.
- Hammer
- RJ45 crimping tool

Supplies (included)

- 3 x wall plugs and screws anchors (\varnothing 6 mm x 50 mm)
- 3 x M4 x 6 mm HEX screws

Supplies (not included)

- CAT 5/6 ethernet cable and RJ45 connector for internet access.
- Power supply cables
- Ferrules (10 mm²), for stranded power supply cables
- 32 A circuit breaker

7. Installation and activation

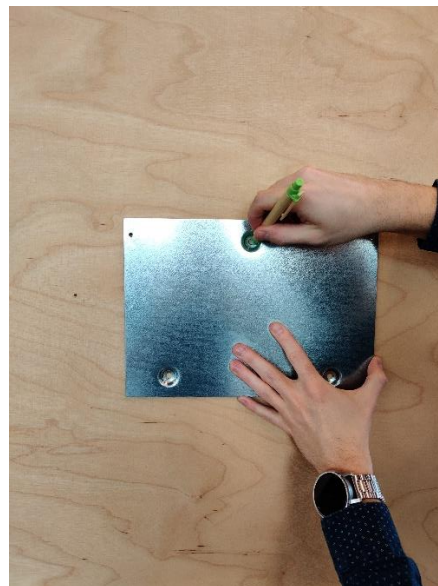
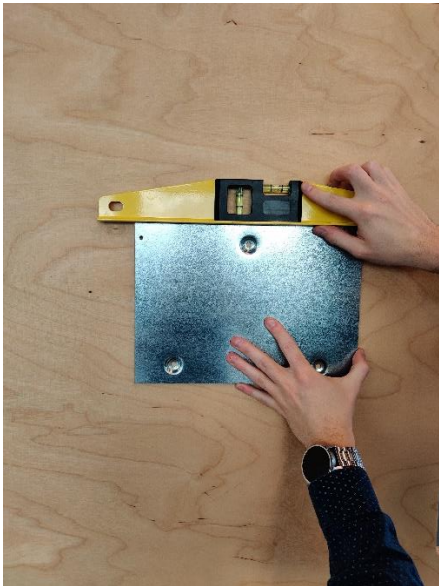
This procedure describes the required steps for the physical installation of the EV Wall Business.



CAUTION: Make sure it is not possible to connect the electric current during installation. Put up caution tape and warning signs to mark the work areas. Make sure no unauthorised people can enter the work areas.

Place the mounting plate in position

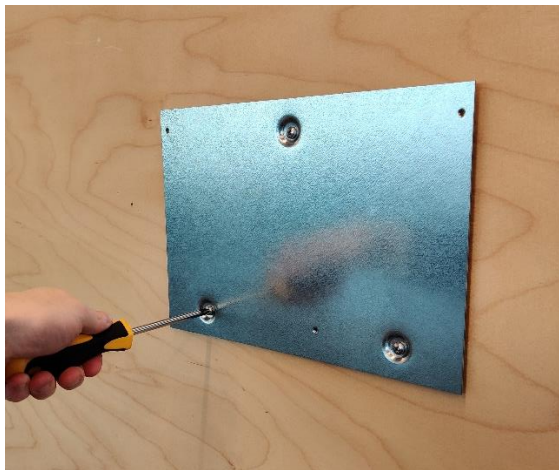
- a. Use the mounting plate to mark the position of the screws on the wall where the EV Wall Business is to be positioned. Make sure the mounting plate is positioned with the 2 insert holes on the bottom, as depicted below.



- b. Drill 3 holes of 10 mm diameter through the slots to a depth of 50 mm. Insert the supplied wall plugs into the holes.

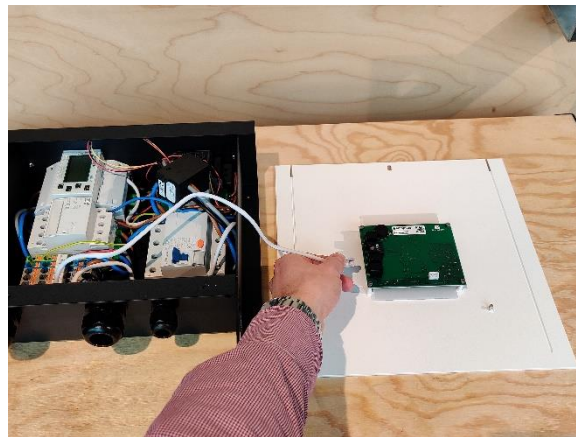
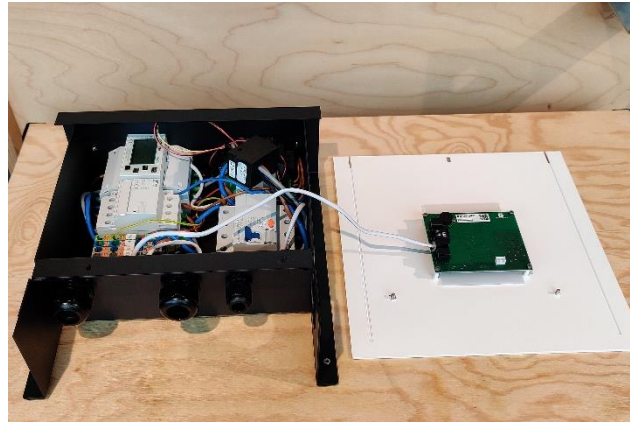


- c. Attach the mounting plate to the wall with the supplied screws.

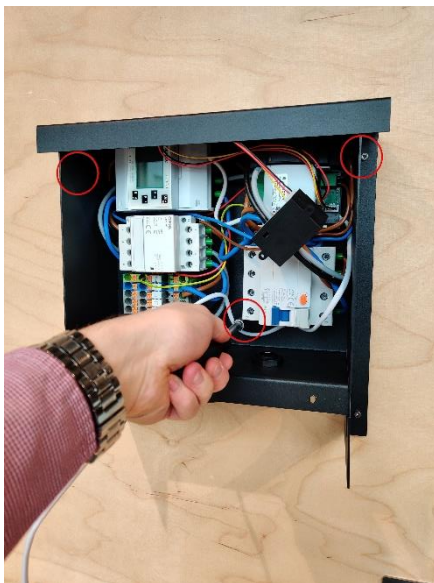


Place the EV Wall Business in position

- a. Remove the front plate of the EV Wall Business and disconnect the communication cables. Safely put aside the front plate to avoid damaging the PCB-board attached to it.

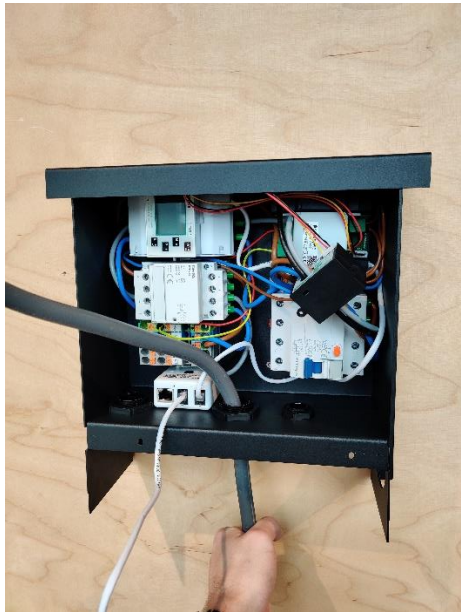


- b. Attach the EV Wall Business housing to the mounting plate using the three supplied M4 x 6 mm HEX screws.

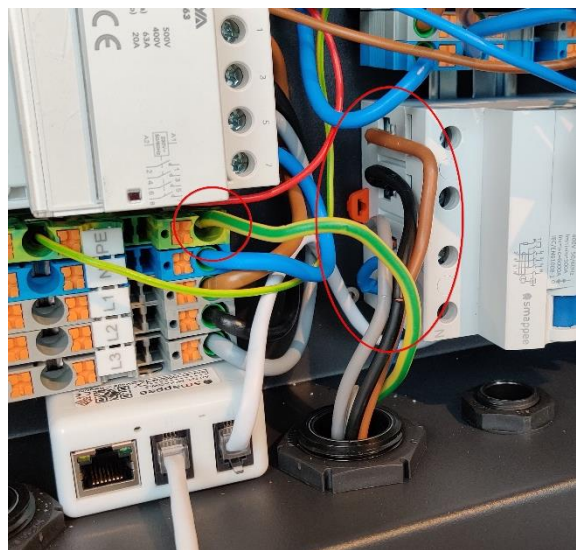
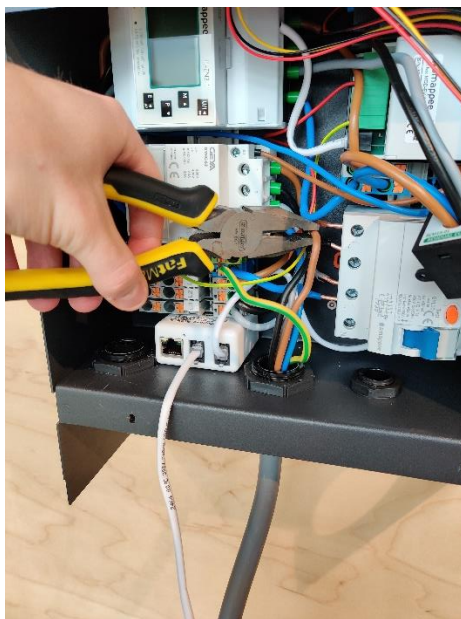


Power supply connection

- a. Slide the power cable through the middle cable gland.



- b. Cut the power supply cables to adequate length and add the ferrules to each conductor if stranded cables are used.
- c. Measure the resistance of the grounding circuit and make sure that it is within acceptable limits. If necessary, install a grounding point closer to the charging station.
- d. Connect each supply cable to the differential. The protective earth should be connected to the terminal block. Tip: when using solid cables, use pliers to bend the cables into an 'L' shape before connecting these to the differential.



Phase rotation

To avoid overloading the first phase with one-phase electric vehicles, phase rotation is recommended. We recommend rotating the phases as shown in the table below.

Charging station	Phase mapping
EV Wall Business 1	L1 – L2 – L3 – N (as indicated on the differential)
EV Wall Business 2	L2 – L3 – L1 – N
EV Wall Business 3	L3 – L1 – L2 – N

And continue with this pattern for other EV Wall Business units.



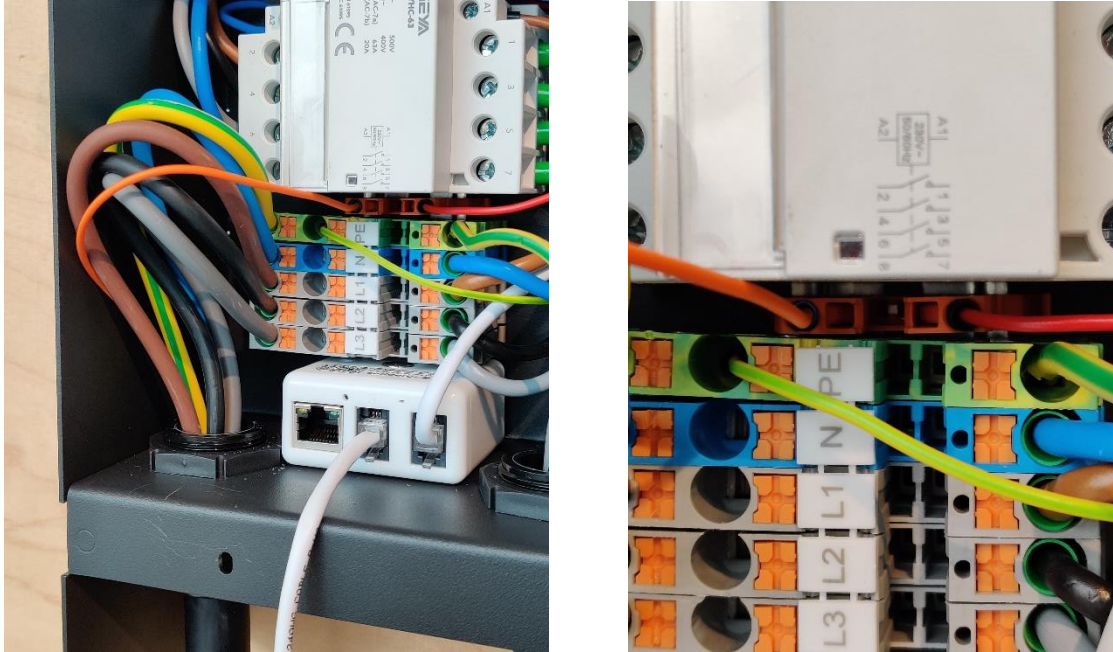
When phase rotation is applied on a connector, adjust the configuration in the Smappee Dashboard.

EV charging cable mounting (only fixed cable version)



This section is only relevant if the EV Wall Business comes with a fixed cable. If you have a socket version, please continue to the next section.

- a. Mount the fixed charging cable through the left M32 cable gland and mount the power supply wires to the terminal block. Do not forget to connect the small orange CP data cable.



- b. Mount the cable tie for strain relief on the charging cable after it enters the M32 cable gland.
- c. For the 8 m version, a separate cable holder is supplied and can be mounted on the wall nearby the EV Wall Business.



The length of the fixed cable can be shortened if required. Cut the cable to its required length and add ferrules (not supplied).

IMPORTANT notes for 3P (3*230V) – Delta topology

When an EV Wall Business is installed in a residential installation with a 3P (3*230V) – Delta grid connection, some additional requirements need to be taken into account. These guidelines have nothing to do with the Smappee EV Wall Business architecture but linked to how the utility provides the grid connection to the home.

Some EV-vehicles are not compatible with 3P (3*230V) grid connection due to a built-in security in the EV. Contact your EV manufacturer for more information.

Context

There are 2 types of Delta connections that the grid operator can use in the low voltage cabinets and is linked to type of transformer used there.

- **Delta - Type 1:** One of the phases in the low voltage cabin is connected to earth. The voltage between ground & 1 of the phases is 0 volts.
- **Delta - Type 2:** None of the phases are connected to earth. The voltage between each phase and earth is 130V.

The security feature that some EVs have is a voltage check the EV does between the phase that is connected as neutral and the ground. If this is not 0 volts, the car won't charge. The presence of this security feature may vary for each manufacturer and for each model.

Guidelines

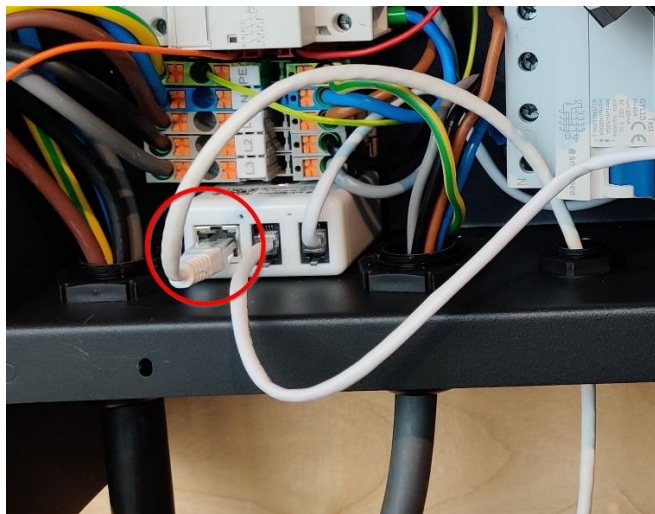
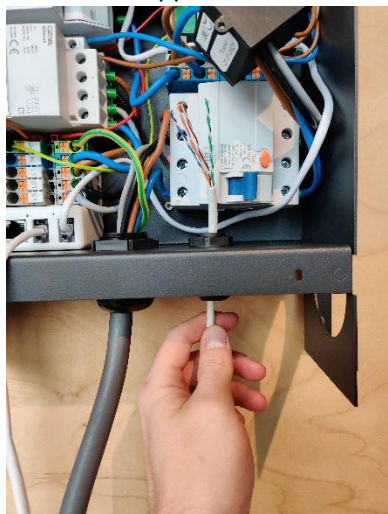
With these guidelines, you are able to determine what you need to do to make sure the EV Wall Business can be charged.

Check prior to the EV Wall Business installation the type of Delta Topology by measuring the voltage between the phases and ground.

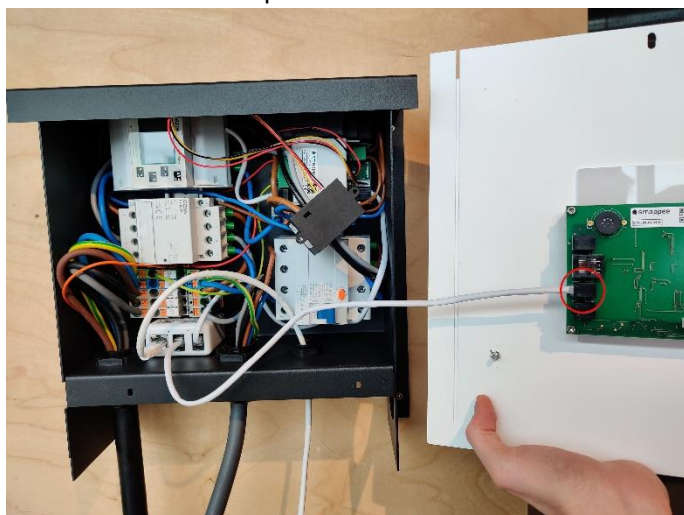
- **If 0 Volts => Type 1:** all EV cars can charge using two phases. The phase that provides 0V needs to be connected to the Neutral of the EV Wall Business power supply.
- **If 130V Volts (not 0V) => Type 2:** if a specific EV is to be charged, check with the EV manufacturer whether it is compatible with this setup. If a specific EV is not compatible or multiple EV-types need to be charged, **an isolation transformer needs to be installed.**

Closure

- a. Attach an RJ45 connector to the Ethernet cable **after** feeding it through the cable gland. Plug it into the Smappee Connect.



- b. Mount the front plate into position by connecting the RJ10 cable to one of the B ports of the PCB attached to the front plate.



Be careful to connect the RJ10 cable to one of the **B** ports. Do not connect it to the A port.

The Ethernet cable should be connected to the Smappee Connect, **not** to the PCB attached to the front plate.

c. Mount and tighten the supplied M4 nuts



Switching on the EV Wall Business



All communication cables must be attached to the front panel before powering the EV Wall Business. The EV Wall Business should also be closed.

- a. Check all connections are secure and power-up the EV Wall Business.
- b. Check the status LEDs:
 - Charging controllers: green flashing light (1 x per 3 seconds)
 - RCM: continuous green light
 - Smappee Connect: blue flashing
 - MID meters: Display is lighting up


Activation

This procedure is done with the Smappee Energy Monitor mobile app. You can download this from the Apple App Store for iOS or the Google Play store for Android phones.



The Smappee App will guide you through the various steps to fill in all the required information.

- Log in to the Smappee App. If you would like to add this charging station to an existing location, log in with an account that has access to that location. If you would like to create a new location, you may create a new account.
- Follow the steps shown in the mobile app.


	Multiple charging stations can be installed at a single location. To add a new charging station to an existing location in the mobile app, go to Settings > Your Smappee charging stations
	The settings of your charging station can be adjusted in the Smappee Mobile app or Dashboard. <ul style="list-style-type: none">• Smappee Mobile App: Name, Minimum and maximum current per connector, Charging speed per connector and LED brightness• Dashboard: Name, Minimum and Maximum current per connector, Phase assignment per connector, Charging speed per connector and LED brightness
	For overload protection or optimised self-sufficiency additional Smappee Infinity components must be installed to measure the Grid and Solar, Battery or other submetering if applicable.

8. Using the EV Wall Business

There are three ways of charging using a Smappee EV Wall Business:

1. Plug and charge: Simply connect your cable and start charging.
2. Swipe and charge: Connect the cable, swipe your card and start charging.
3. Scan and charge: Connect the cable, scan the QR code in the Smappee app and start charging.

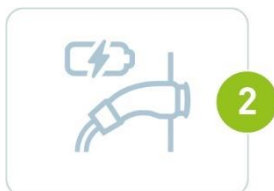
Below you can find the different charging sequences.

	Each EV Wall Business that is installed and activated is Plug and charge. Changing the Session Activation Method is done using the Smappee Dashboard. Changing the authentication methods can be done remotely.
	Scan and charge and Swipe and charge (with Smappee CSMS) can only be used when a Smappee Payment Agreement has been signed. Please contact your Business Developer for more info.

Plug and charge

The charging station is freely accessible without the need to authorize. Anyone can plug their car into the charger and start charging for free.

Start charging



Stop charging



Swipe and charge

Charging sessions can be started using an RFID card. You can either use a Smappee Smart Charge Card for free charging or (if activated) a third party eMSP card to pay for charging sessions.

- **Free charging:** charging is free with a Smappee Smart Charge Card or any other authorized RFID card. Once the charging cable is plugged-in, the user simply swipes their RFID card and the free charging session begins. All authorized cards must first be added to the whitelist using the 'Whitelisting' card on dashboard.smappee.net. See [this](#) article for more information. Cards can be ordered via info@smappee.com.
- **Public charging:** other EV drivers can use this charging station and pay with a payment card from a third-party eMSP such as Shell Recharge or Plugsurfing. This can be done through Smappee's own CSMS or through a third-party CSMS. In case you would like to use the Smappee CSMS, please contact info@smappee.com to activate this.

Start charging



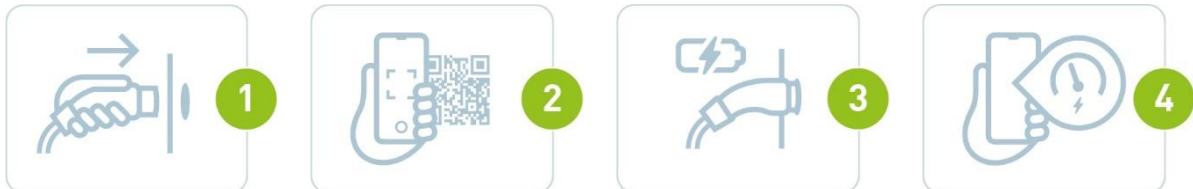
Stop charging



Scan and charge

The user pays by credit card (Visa or Mastercard) using the Smappee app. They scan the QR code shown on the charging station and the app will guide them through the process of starting the charging session. It is also possible to set discount rates for specific users. Please contact info@smappee.com to activate Scan and charge.

Start charging










Stop charging



More information on how to use the Smappee EV Wall Business can be found on: support.smappee.com/hc > Smappee EV Line

LED status

LED colour	LED status	Meaning	Action of the user
	White continuous	The Smappee EV Wall Business is available.	Connect your EV with the Smappee EV Wall Business.
	Blue continuous	Your EV is connected with the Smappee EV Wall Business, but is not yet charging.	<ul style="list-style-type: none"> • If using an RFID, scan your charge card and wait until the LED turns blue and flashes. • If using QR codes, scan the QR code and wait until the LED is green pulsing. • If no authorisation is required, wait until the LED becomes green pulsing.
	Blue flashing	Your RFID card is being verified.	Wait until the LED is green pulsing.
	Green pulsing	The Smappee EV Wall Business is charging your EV.	Your EV is being charged.
	Green continuous	The EV is now fully charged.	Disconnect the cable.
	Red continuous	The Smappee EV Wall Business is unavailable.	Check the manual or contact your supplier for more info and further steps.
	Red flashing	Your charge card is not authorised.	Contact your charge card supplier.

9. Declaration of conformity

We,

smappee nv
Evolis 104
B-8500 Kortrijk
Belgium

following the provision of the following EC Directives:

- 2014/35/EU The Low Voltage Directive
- 2014/30/EU The Electromagnetic Compatibility Directive
- 2014/32/EU Measuring Instrument Directive
- 2011/65/EU RoHS Directive

hereby declare that the product:

EVWB-332-BR-E-W, EVWB-332-BR-E-B, EVWB-332-BL-E-W, EVWB-332-BL-E-B, EVWB-332-C2R-E-W, EVWB-332-C2R-E-B, EVWB-332-C2L-E-W, EVWB-332-C2L-E-B, EVWB-332-C8R-E-W, EVWB-332-C8R-E-B, EVWB-332-C8L-E-W, EVWB-332-C8L-E-B

is in conformity with the applicable requirements of the following documents

* Metering :

EN50470-1 :2006 / EN50470-3 :2006

* Emissions:

(EN61326-1 : 2013)

Radiated Emission: EN 55011:2009 / EN 55032:2015 (Class B)

Conducted Emission: EN 55011:2009 / EN 55032:2015 (Class B)

Harmonic current Emission: EN 61000-3-2:2005 +A1:2008 + A2:2009

Flicker: EN 61000-3-3:2008

* Immunity:

(EN61326-1 : 2013)

ESD : EN 61000-4-2:2008 / EN 61000-4-2 :2009

Radiated immunity : EN 61000-4-3:2006 + A1:2007 + A2: 2010

Power frequency magnetic field: EN 61000-4-8:2009

Voltage dips/interruptions: EN 61000-4-11:2004

Common Mode Immunity: EN 61000-4-6:2008 / EN 61000-4-6:2009

Burst : EN 61000-4-4:2004 / EN 61000-4-4:2012

Surge: EN 61000-4-5:2005 / EN 61000-4-5:2006

* Safety:

Metering Function : IEC 61010-1 Ed 3.0 (2010-06) + A1:2016

AC Charging equipment : IEC 61851-1 (2017) / EN61558-1

Authorized signatory



Stefan Grosjean
CEO